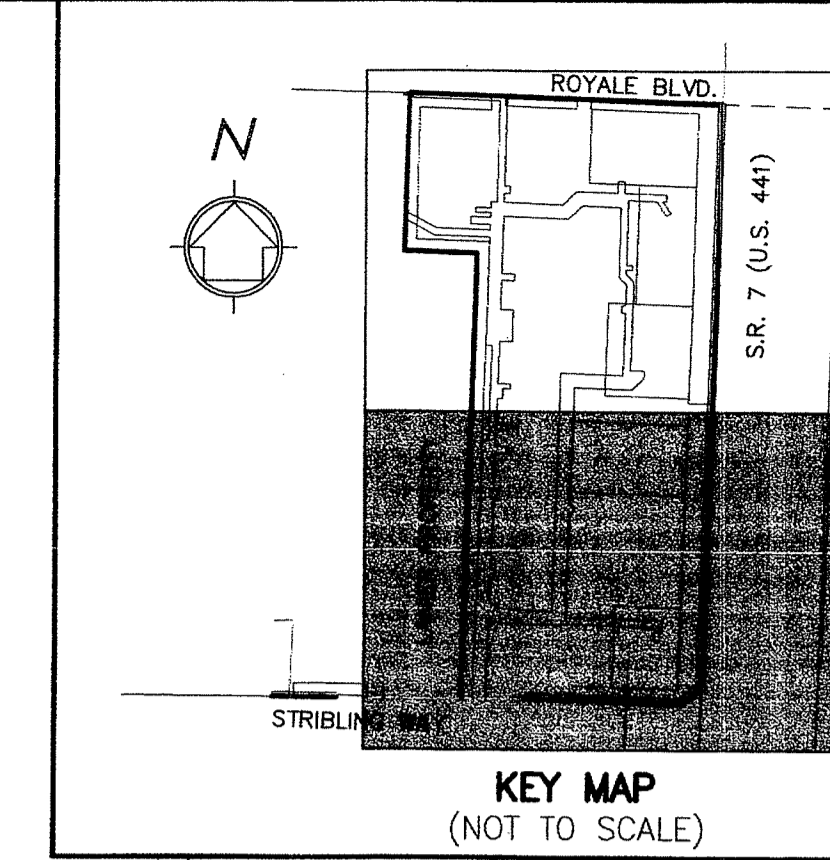


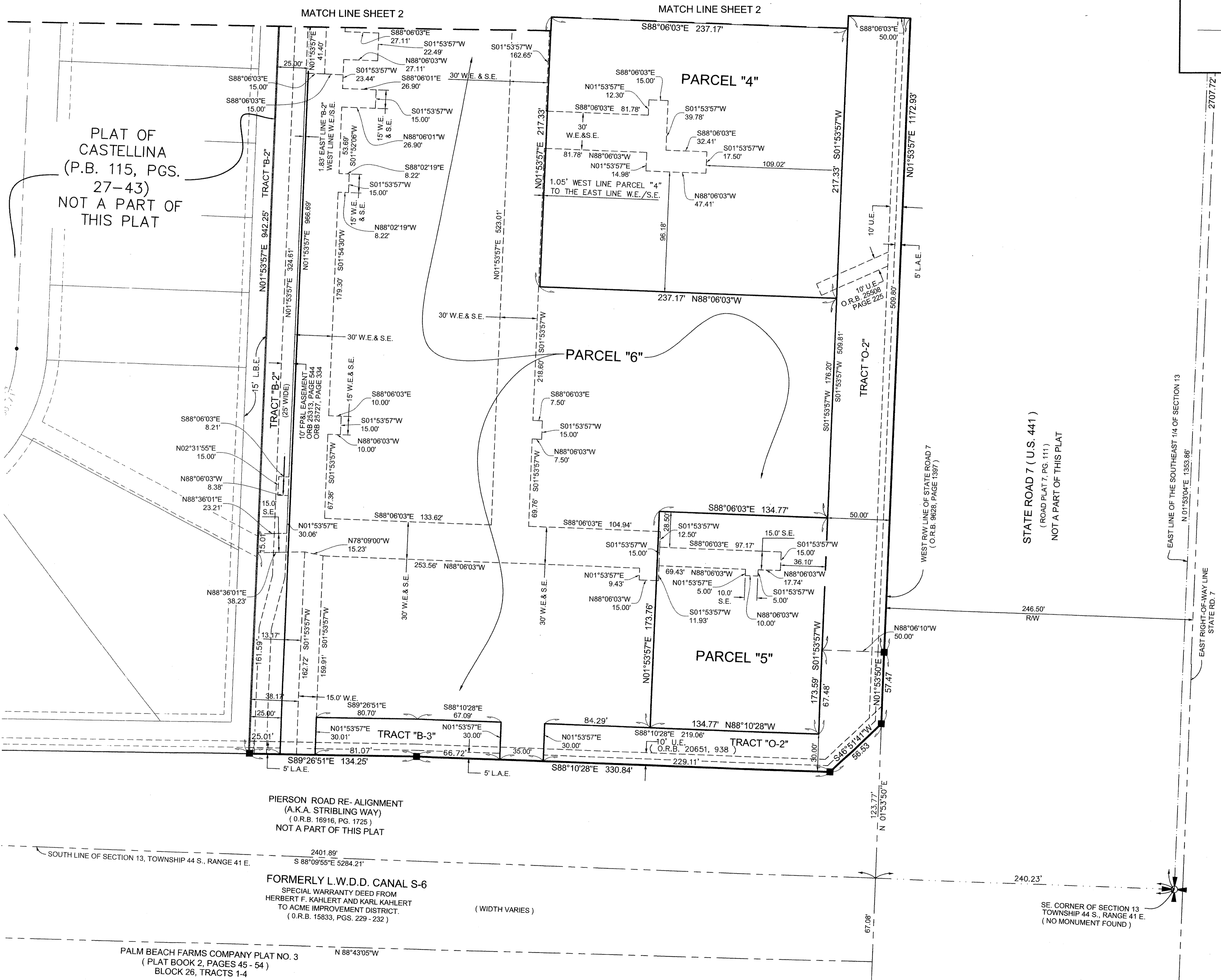
VILLAGE GREEN CENTER REPLAT

LYING IN SECTION 13, TOWNSHIP 44 SOUTH, RANGE 41 EAST, VILLAGE OF WELLINGTON, PALM BEACH COUNTY, FLORIDA, BEING A REPLAT OF VILLAGE GREEN CENTER, AS RECORDED IN PLAT BOOK 115, PAGES 153 THROUGH 155, PUBLIC RECORDS OF PALM BEACH COUNTY, FLORIDA.



148

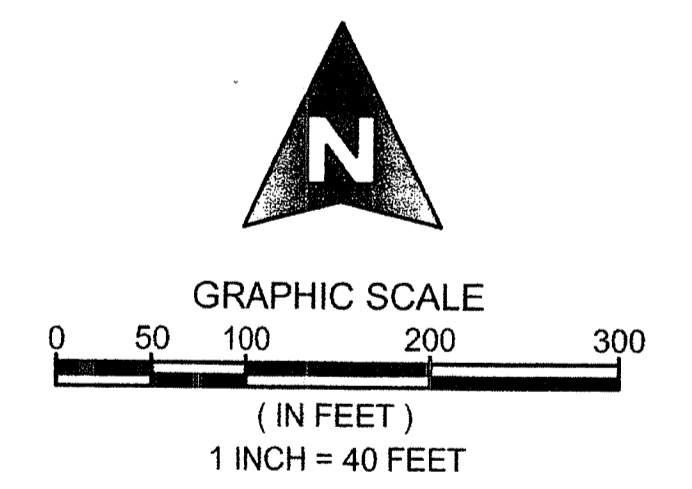
COUNTY OF PALM BEACH)
 STATE OF FLORIDA) SS
 THIS PLAT WAS FILED FOR RECORD AT)
 M. THIS) DAY OF)
 2015, AND DULY)
 RECORDED IN PLAT BOOK NO.)
 ON PAGE) THRU)
 SHARON R. BOCK,
 CLERK AND COMPTROLLER
 BY: _____, D.C.



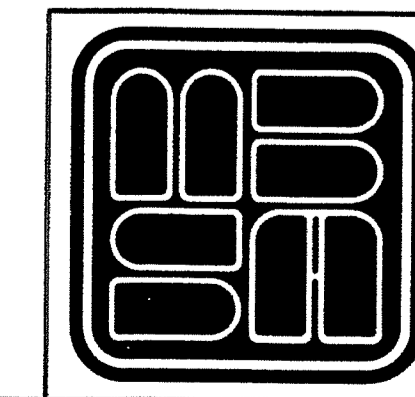
PLAT OF CASTELLINA (P.B. 115, PGS. 27-43) NOT A PART OF THIS PLAT

AREA TABULATION

TRACT "O-1"	0.827 ACRES
TRACT "O-2"	0.830 ACRES
TRACT "B-1"	0.070 ACRES
TRACT "B-2"	0.923 ACRES
TRACT "B-3"	0.102 ACRES
PARCEL "1"	0.788 ACRES
PARCEL "2"	0.668 ACRES
PARCEL "3"	0.679 ACRES
PARCEL "4"	1.183 ACRES
PARCEL "5"	0.537 ACRES
PARCEL "6"	8.327 ACRES
PARCEL "7"	0.966 ACRES
TOTAL	15.899 ACRES



SHEET 3 OF 3



MICHAEL B. SCHORAH & ASSOCIATES, INC.
 1850 FOREST HILL BLVD., SUITE 206
 WEST PALM BEACH, FLORIDA 33406
 EBM 2438 TEL. (561) 968-0080 FAX. (561) 642-9726 LBM 2438
VILLAGE GREEN CENTER REPLAT